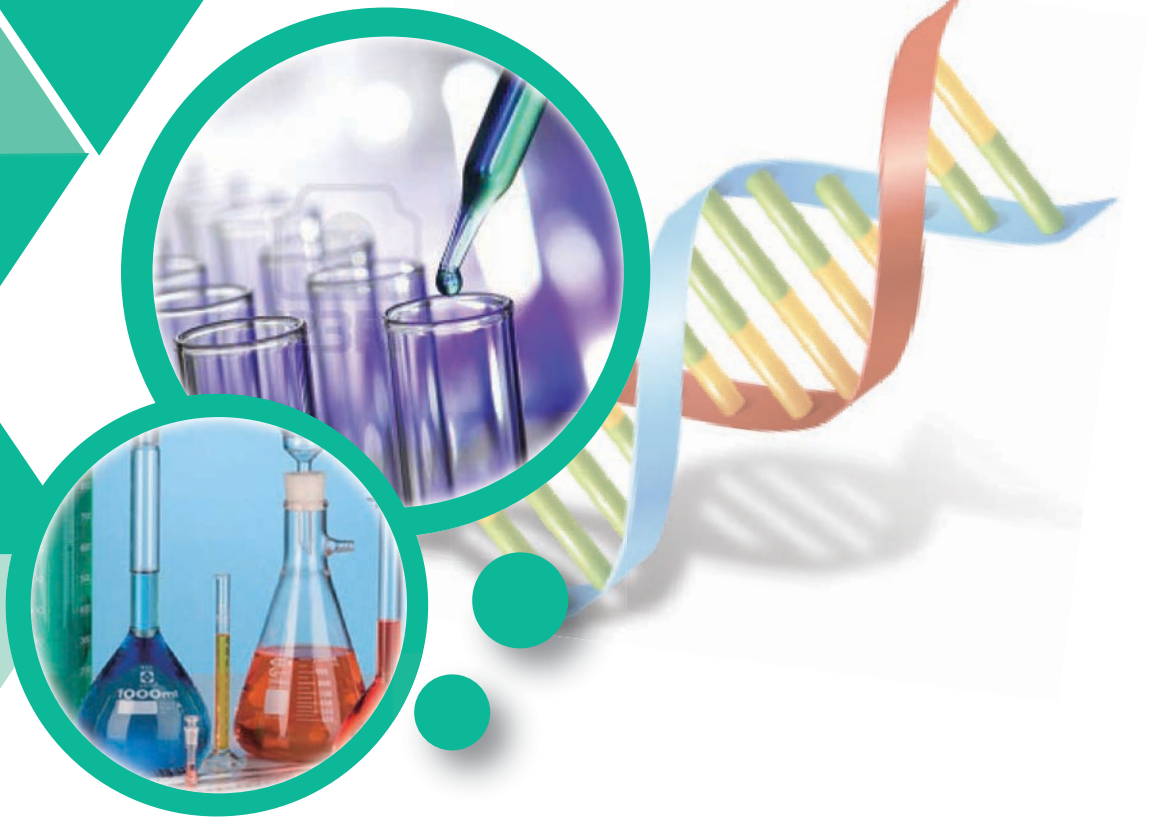




# BT SCIENCE CATALOGUE

*"Fulfill Your Research Needs"*



[www.btscience.com.my](http://www.btscience.com.my)

# INTRODUCTION

**BT SCIENCE SDN BHD** formerly known as Bumi Telus Enterprise is a growing company as a Research Supplier Products in Malaysia. We provides a high quality research products to science community include universities, research institutes, private enterprises, factory and hospitals. We are registered contractor for Malaysia Government and has been registered under Ministry of Finance (Malaysia) with registration reference 357-02238425.

We are committed in marketing and distribution of laboratory products while catering to the unique needs of individual customer. With unsurpassed customer service has earned us the reputation of quality supplier. For over few years, our dedication to provide the best research products by simplifying customer procurement process and ensure they get the right products as they needed.

## Our Mission

BT Science Sdn. Bhd. develop and grow timely, our steady development and success is attributed to our philosophy and commitment to serve our customer with strong products expertise and offer the best prices in laboratory supplies industry without ever compromising quality. We continue to expand our market beyond the domestic market to integrate synergistic products and services to serve our customers better.

## Our Vision

As part of growth plan for the next decade of 21st Century, BT Science Sdn. Bhd. has a goal to be the most trusted source of research products by helping our customer achieve accurate and consistent result in their research. Our vision is make an impact in the industry we serve.



# CONTENT

Lab Essentials

1-2

Analytical Chemistry

3-4

Separation & Filtration

5

Animal Analysis

6

Life Science &  
Biotechnology Research

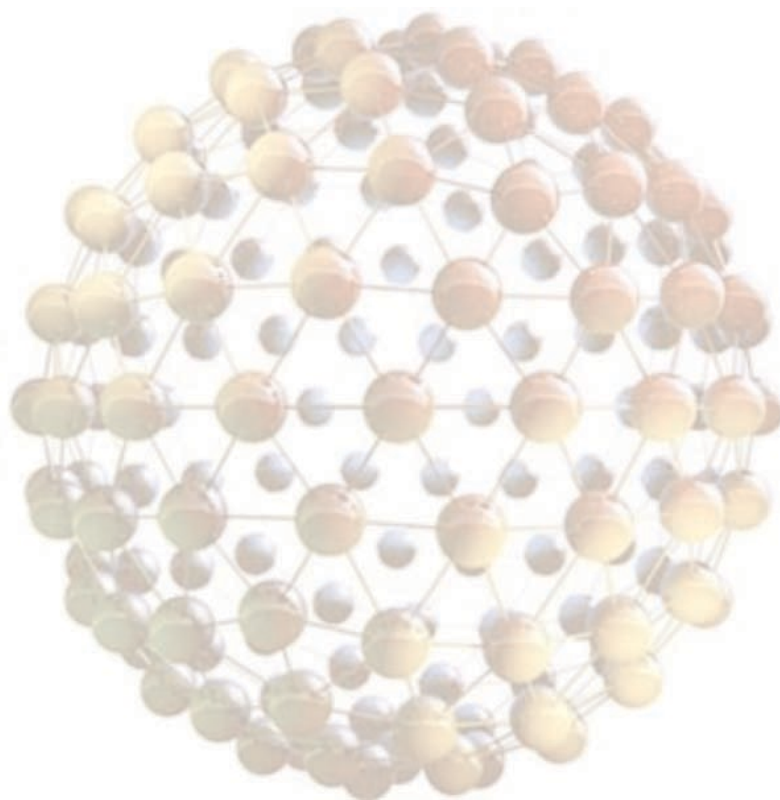
7-8

Chemical & Culture Media

9-10

Lab Instruments

11-12



## DISPOSABLE ITEMS

### Serological Pipette

Serological Pipette, PS, individually wrapped, sterile

### Pasteur Pipette:

- Pasteur Pipette, LDPE, sterile, individually wrapped, sterile, 1ml & 3ml
- Pasteur Pipette, LDPE, 1ml & 3ml

### Centrifuge Tube:

- Centrifuge tube, PP, conical bottom with blue screw cap, 15ml & 50ml
- Centrifuge tube, PP, conical bottom with blue screw cap, sterile, 15ml & 50ml

### Micro centrifuge Tube

- Micro centrifuge tube with flat lids, 0.5ml
- Micro centrifuge tube with flat lids, 1.5ml
- Micro centrifuge tube with flat lids, 2.0ml

### PCR Tubes

PCR tubes with flat lids, 0.2ml

### Inoculating Loops & Needles

- Inoculating Loops & Needles, sterile, white, 1ul
- Inoculating Loops & Needles, non-sterile, white, 1ul
- Inoculating Loops & Needles, sterile, blue, 10ul
- Inoculating Loops & Needles, non-sterile, blue, 10ul

### Cell Spreader

Cell Spreader, L-shape, sterile, autoclavable  
 Cell Spreader, T-shape, sterile, autoclavable  
 Cell Spreader, triangle shape, sterile, autoclavable

### Tissue Culture Flask

- Tissue culture flask, Rectangular Canted Neck with vent cap.  
 Growth area;
  - 25cm<sup>2</sup>
  - 75cm<sup>2</sup>
  - 150cm<sup>2</sup>
- Tissue culture flask, Rectangular Canted Neck with plug-seal cap.  
 Growth area;
  - 25cm<sup>2</sup>
  - 75cm<sup>2</sup>
  - 150cm<sup>2</sup>

### Tissue Culture Plate with lids, PS, flat bottom, individually wrapped, sterile

- No. of wells : 6
- No. of wells : 12
- No. of wells : 24
- No. of wells : 48
- No of Wells: 96
- No of Wells: 96( U-shaped)

### Cryogenic Vials

- Cryogenic vials, internal threaded, sterile, self-standing, 2ml
- Cryogenic vials, external threaded, sterile, self-standing, 2ml
- Cryogenic vials rack

### Containers

- Urine container with screw cap, individually wrapped, sterile, 60ml
- Urine container with screw cap, non-sterile, 60ml
- Stool container with attached spoon, 60ml

### Weighing Tray/Boat

- Weighing boat 41 x 41mm, PP
- Weighing boat 89 x 89mm, PP
- Weighing boat 140 x 140mm, PP

### Aspirator Bottle

Capacity	Type of handle(s)
5 Liters	Stainless steel carrying handle
10 Liters	Stainless steel carrying handle
25 Liters	2 moulded shoulder handles
60 Liters	2 Plastic handles

## SURGICAL & SAFETY PRODUCTS

### Swab

- Alcohol swab, sterile
- Cotton swab with wooden stick, sterile
- Plain dry swabs in tubes, sterile
- Plain dry swabs in peel pouches, sterile

### Gauze & Sponge

- 4-Ply Non-Woven Sponge
- Non-Woven Sponge Roll, 100m
- 4-Ply Gauze Roll
- Gauze sponge

### Cotton Roll & Applicator

- Cotton wool roll ,500g
- Cotton wool ball, 0.6g
- Cotton tip applicator

### Face Protection

Disposable face mask  
 Faceshields & Visors

### Eyewear Protection

Safety goggles (anti-fog)  
 Safety glasses

### Respiratory Protection

Disposable respirators Particulate respirators, dust mask  
 Disposable respirators Particulate respirators, Organic vapour  
 Disposable respirators Particulate respirators, acid gas mask)  
 cartridge & filters

### Hand Protection:

Examination Gloves (Letax, Nitrile & Vinyl)  
 Chemical Resistance Gloves (Latex, Nitrile & Neoprene)





# ANALYTICAL CHEMISTRY

## Gas Chromatography (GC)

### How to choose a column :

1. Stationery Phase – based on the application to be performed
2. Column Inner / outer diameters
3. Column Film Thickness
4. Column Length

### Products Details :

Capillary GC Columns  
Packed Column (Custom made)

### GC Accessories :

Septa (Silicone rubber, Merlin Micro seal)  
Inlet Liners  
Liner O-rings  
Inlet seals  
Ferrules  
Nuts  
Splitters  
GC Column Test Mixes  
Specialized hand Tools & Maintenance

## HPLC/UPLC

### How to choose an HPLC column :

1. Packing Pore Size
2. Column Diameters
3. Particle Size
4. Column Length
5. Column Bonded Phase (C18, Phenyl, Cyano, RP-Amide)

### Products Details :

Analytical HPLC/UPLC Columns  
Ion Exchange Columns  
Ion Exclusion Columns  
Hydrophilic Interaction Chromatography (HILIC) Columns  
GPC & SEC Columns

### HPLC Accessories :

Fittings  
Nuts & Ferrules  
Capillary & Fitting Kits  
In-line Filters  
Fraction Collector  
Valves  
Vacuum Pumps  
Lamps & Detectors

## SPE

### SPE Phase Selection Guide :

1. Sample Matrix (Aqueous solution or Organic solvents)
2. Retention Mechanisms (Reversed phase, Ion-exchange, Normal phase)
3. Analyte Characteristics (Polar, Non-polar, Weak cations/anions, Strong cations/anions)
4. Applications (Pharmaceuticals, Environmental, Foods, Agriculture)
5. Bed weight & Tube volume

### Products Details :

Polypropylene SPE Tubes  
Glass SPE Tubes  
Dispersive SPE Tubes  
Reversible SPE Tubes  
Rezorian Cartridges  
QuEChERS Kits  
96-wells SPE Plates

### SPE Accessories :

PTFE and Stainless steel frits  
SPE Disks  
SPE Tube Cap  
Large Volume SPE Reservoir  
APE Tube Adapter  
Vacuum Manifolds (12-port, 24-port)  
Vacuum Manifold for 96-well Plates  
Vacuum Pump Trap Kit  
Vacuum Manifold Pumps

## SPME

Fiber Selection Guide: (Choose a fiber according to the analytes you want to extract)

1. Types of analytes (Molecular Weight and polarity of compounds)- Gases, Volatiles, Semi-volatiles,

### Products Details :

SPME Fiber  
(We offers SPME fibers in a range of chemistries, formats, and for use with autosampler or manual injections)

### SPME Fiber Holder

(for use with autosampler or manual injections)

### SPME Fiber Kits

(Consist of 3 fibers, depends on analytes to be extract)

### SPME-GC Inlter Liners

(Variable OD, ID & length)

### SPME Accessories :

Fiber Holder Needle  
Fiber Holder Hub  
Sampling Stand  
Merlin Microseal System  
Merlin Microseal Replacement Septum  
SPME Inlet Guide  
Vials for SPME Sampling Stand  
Headspace Vials for CTC Autosampler

## Thin Layer Chromatography (TLC)

### TLC Plate Selection Guide :

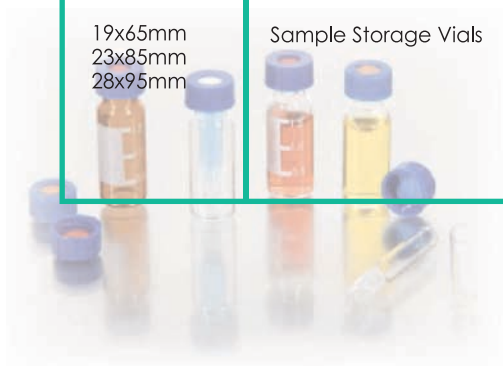
1. Matrices Type (Silica Gel, Aluminium Oxide, Cellulose and Polyamide)
2. Supports (Glass, Aluminium Foil, Plastic)
3. Plate Dimensions
4. Binders (Organic, Inorganic, None)

### TLC Accessories :

TLC Dessicating Cabinet  
TLC Developing Tanks & Chambers  
Spectroline UV Viewing Cabinets  
UV Lamps  
TLC Plates Racks  
Adsorbent Scrapers  
Cutting Tools  
Syringes & Pipettes  
Bulk TLC Adsorbents  
TLC Sprayers

## VIALS

Vial Dimensions	Vial Type	Volume	Cap Type	Septa Type
12x32mm	Crimp Cap Vials Crimp Cap Vials with Fixed insert 300µl	2ml 2ml	Aluminium Crimp Cap (blue/red/silver) with 11mm Septa	a. PTFE/silicone/PTFE b. PTFE/silicone c. PTFE/butyl d. PTFE/red rubber septa
	Snap Cap Vials Snap Cap Vials with Fixed insert 300µl	2ml 2ml	Snap Cap (blue/red/green/clear) with 11mm Septa	a. PTFE/silicone/PTFE b. PTFE/silicone c. Pre-slit PTFE/silicone PTFE d. Clear PTFE/red silicone e. Solid polyethylene membrane
	Snap Cap Vials	2ml	Snap Cap (blue/red/green/clear) with 11mm Septa	a. Red PTFE/white silicone b. Clear with PTFE
			Screw Cap (black/blue/green/red/purple/light turquoise) with 9mm Septa	a. PTFE/red silicone b. Bonded PTFE/silicone c. Bonded pre-slit PTFE/silicone d. Pre-slit PTFE/silicone e. PTFE/silicone/PTFE f. PTFE-lined solid top g. PTFE/white silicone h. PTFE/Silicone i. Open top, no septa
Micro-V Vials	1.5ml	Crimp Cap/Snap Cap/Screw Cap (blue/black/red/silver/green/clear/purple/light turquoise) with 8mm/9mm/11mm septa	a. PTFE/silicone/PTFE b. PTFE/silicone c. PTFE/butyl d. PTFE/red rubber septa e. Pre-slit PTFE/silicone PTFE f. Clear PTFE/red silicone g. Solid polyethylene membrane h. PTFE/red silicone i. Bonded PTFE/silicone j. Bonded pre-slit PTFE/silicone k. Pre-slit PTFE/silicone l. PTFE/silicone/PTFE m. PTFE-lined solid top n. PTFE/white silicone o. PTFE/Silicone p. Open top, no septa	
15x45mm	Screw Thread Vials	4ml	13-425 Screw Cap with Septa	a. PTFE/silicone b. White virgin PTFE c. PTFE/natural rubber d. Red PTFE/white silicone
	Sample Storage Vials	4ml	13-425 Screw Cap (white), Closed Top/Open Top	a. PTFE/natural rubber b. Red PTFE/white silicone c. White virgin PTFE
23x46mm 23x75mm	Headspace Vials (Flat Bottom & Round Bottom)	10ml 20ml	Silver aluminium or steel Crimp Cap/Screw Cap with 18mm/20mm Septa	a. PTFE/silicone septa b. PTFE/Silicone c. Gray PTFE/black butyl molded d. Molded PTFE/butyl
19x65mm 23x85mm 28x95mm	Sample Storage Vials	12ml 22ml 40ml	15-425 Screw Cap, polypropylene (white), Closed Top/Open Top 20-400 Screw Cap polypropylene (white), Closed Top/Open Top 24-414 Screw Cap polypropylene (white), Closed Top/Open Top	PTFE/silicone liner





# SEPARATION AND FILTRATION

## FILTER PAPERS



- a. Qualitative Filter Papers
- b. Quantitative Filter Papers

## EXTRACTION THIMBLES, CELLULOSE

Size (mm)	Qty per box
19 x 90	25
22 x 60	25
25 x 80	25
30 x 80	25
30 x 100	25
33 x 80	25
43 x 123	25

## MEMBRANE FILTERS

Membrane Material	Pore Size (um)	Diameter (mm)
CELLULOSE ACETATE (CA)	0.22	13
	0.22	25
	0.22	47
	0.45	13
	0.45	25
MIXED CELLULOSE ESTER (MCE)	0.22	13
	0.22	25
	0.22	47
	0.45	13
	0.45	25
NYLON	0.22	13
	0.22	25
	0.22	47
	0.45	13
	0.45	25
PTFE	0.22	47
	0.45	47
POLYETHERSULFONE (PES)	0.22	25
	0.22	47
	0.45	25
	0.45	47

## SYRINGE FILTERS

Membrane Material	Pore Size (um)	Diameter (mm)
CELLULOSE ACETATE (CA)	0.22	13
	0.22	25
	0.45	23
	0.45	25
PVDF	0.22	13
	0.22	25
	0.45	23
	0.45	25
PES	0.22	13
	0.22	25
	0.45	23
	0.45	25
NYLON	0.22	13
	0.22	25
	0.45	23
	0.45	25
PTFE	0.22	13
	0.22	25
	0.45	23
	0.45	25



## FILTRATION ASSEMBLY

47mm Filtration Assembly, glass.

Includes:

1. 300ml funnel
2. 47mm aluminium clamp
3. Fritted support base
4. 1000ml flask

Accessories;

Vacuum Pump

Vacuum manifolds



# ANIMAL ANALYSIS

## VENTILATED CAGES

### Simple

Simple to increase visibility and handling improved with reducing of weight.

### Safe

Recyclable ensure safe environment

### Easy to use

Only have two parts and easy to use

### Great design

Watering & Feeder System improved



## WATERING & FEEDER SYSTEM

### Feeder System

Optimize animal diet in every single day with easy handling and food storage  
Easy clean and autoclaveable to ensure animal in the good conditions  
Semiautomatic, food can be filled semiautomatically by feeder system

### Watering System

Friendly  
Friendly to handle and store which offer an alternative method for emergency water supplies

### Valve

Come with disposable valve to ensure watering system is working effeciently

### Easy to carry

Can be carried anywhere you go

## METABOLIC CAGES

Enables to do metabolism studies by collection of urine and feces. Well designed compartment assuring purity of samples.

### Easy to handle

Compartment designed ensure collection of sample will be more easy and ensure studies can be made accurately

### Visibility

Visibility increased with simple design

## DIURESIS CAGES

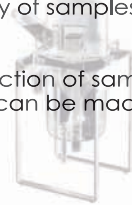
Enables to do scientific studies by collection of blood behavioral information, urine and feces. Well designed compartment assuring purity of samples.

### Easy to handle

Compartment designed ensure collection of sample will be more easy and ensure studies can be made accurately

### Visibility

Visibility increased with simple design



## RODENT HOLDER

Enables to do scientific studies by simple injection from blood sample. Rodent holder designed to prevent rodent move aggresively during injection.

### Easy to handle

Shape design ensure rodent handled easily and injection can be performed effectively.

### Visibility

Visibility increased with simple design

## SURGICAL KITS

Surgical kits for all surgical procedures.

### Easy to handle

Designed for better handling during operation.

### High quality steel

For better performance.

## GLOVE HANDLING ANIMAL

Full protection glove for wild animal handling.

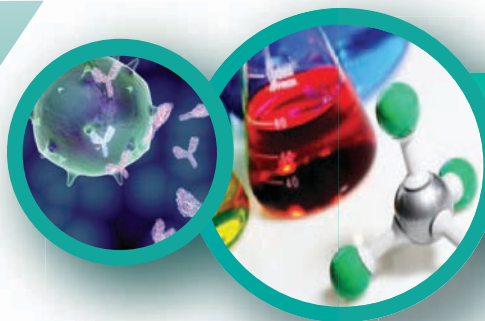
### Texture & Shape

Give a great mobility and comfort for long time use.

### Safety

Better protection for heavy duty use.





# LIFE SCIENCE & BIOTECHNOLOGY RESEARCH

## DNA & RNA Purification & Analysis

### DNA Extraction

- a. Plasmid Isolation
  - i. Plasmid DNA Miniprep Kits
  - ii. Plasmid DNA Midiprep Kits
  - iii. Plasmid DNA Maxiprep Kits

- b. Agarose Gel Extraction Kits

### Nucleic Acid Gel Electrophoresis

- a. DNA Electrophoresis
  - i. Agarose gel electrophoresis
  - ii. Acrylamide Gel Electrophoresis
  - iii. DNA Loading Buffer

- b. DNA Ladders
  - i. 100bp ladder
  - ii. 1 Kb DNA Ladder
  - iii. DNA loading dye



### Viral RNA/DNA Purification

- a. Viral RNA/DNA Mini Kit
- b. 96 Viral RNA/DNA Purification Kit

## POLYMERASE CHAIN REACTION (PCR)

### PCR Enzymes & Master Mixes

- Taq DNA Polymerase (Set with PCR components)
  - i. Standard PCR enzyme
  - ii. Hot-start PCR enzyme
  - iii. Proof-reading PCR enzyme
  - iv. High Fidelity PCR enzyme

### PCR Reagents

- a. PCR Buffers
- b. dNTPs Solution



## CLONING

### Competent Cells

How to choose the right competent cell:

1. By application
2. By strain
3. By formats

### Restriction Enzyme Digestion and Ligation

- a. Restriction Enzyme
- b. Restriction Enzyme Buffer

## PROTEIN EXPRESSION

- a. Eukaryotic & Prokaryotic Protein Expression
- b. Cell-Based Protein Expression
- c. Cell-Free Labelling and Detection
- d. Western Blot Systems
  - i. Fluorescent Labeling
  - ii. Colorimetric and Chemiluminescent Labeling Systems
  - iii. Ligand Conjugates



## CELL CULTURE & TRANSFECTION

### a. Cell Culture Media

- i. DMEM - Dulbecco's Modified Eagle Medium
- ii. RPMI Media 1640
- iii. Minimum Essential Media (MEM)

### b. Cell Culture Reagents

- i. Balanced Salt Solutions
- ii. Hanks' Balanced Salt Solutions
- iii. Phosphate-Buffered Salines
- iv. Dulbecco's Phosphate-Buffered Salines

### c. Cell Dissociation Reagents

- i. Trypsin, Trypsin EDTA
- ii. TrypLE Express

### d. Distilled Water

### e. HEPES

### f. Sodium Bicarbonate Solution

Growth Factor, Cytokine, or Chemokine:

### g. Antibiotics (Wide range of Antibiotics to control contamination)

- i. Ampicillin
- ii. Actinomycin D
- iii. Carbenicillin
- iv. Cefotaxime
- v. Fosmidomycin
- vi. Gentamicin
- vii. Kanamycin
- viii. Neomycin
- ix. Penicillin Streptomycin
- x. Polymyxin B
- xi. Streptomycin Sulfate

### h. Media Supplements

- i. 2-Mercaptoethanol
- ii. Amino Acid Solution
- iii. L-Glutamine, Glutamine
- iv. HAT Supplement
- v. HT Supplement
- vi. MEM Vitamin Solution
- vii. Sodium Pyruvate



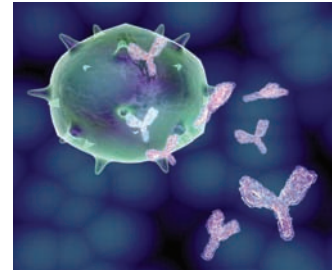
## ANTIBODIES

### Primary Antibodies

- i. Monoclonal Antibodies
- ii. Polyclonal Antibodies

The range of over 10,000 antibody products is available for a variety of animal species:

- i. Human
- ii. Mouse
- iii. Rabbit
- iv. Rat
- v. Bovine
- vi. Goat
- vii. Equine
- viii. Feline
- ix. Canine
- x. Chicken
- xi. Bacterial
- xii. Viral

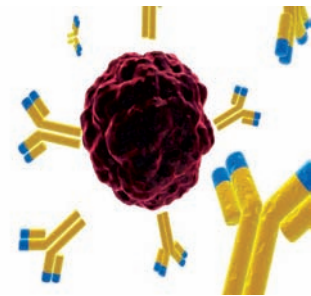


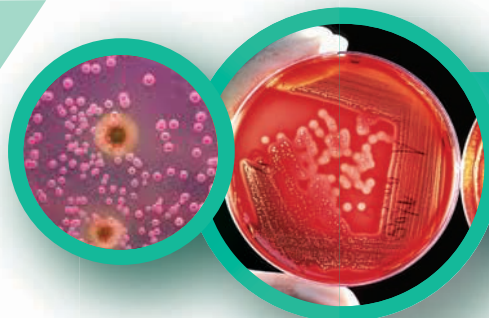
### Secondary Antibodies

We offer secondary antibodies that are available with a variety of target species and conjugated labels.

Target Species :

- i. Human
- ii. Bovine
- iii. Rabbit
- iv. Rat
- v. Bovine
- vi. Goat
- vii. Equine
- viii. Feline
- ix. Canine
- x. Chicken





## CHEMICAL AND CULTURE MEDIA

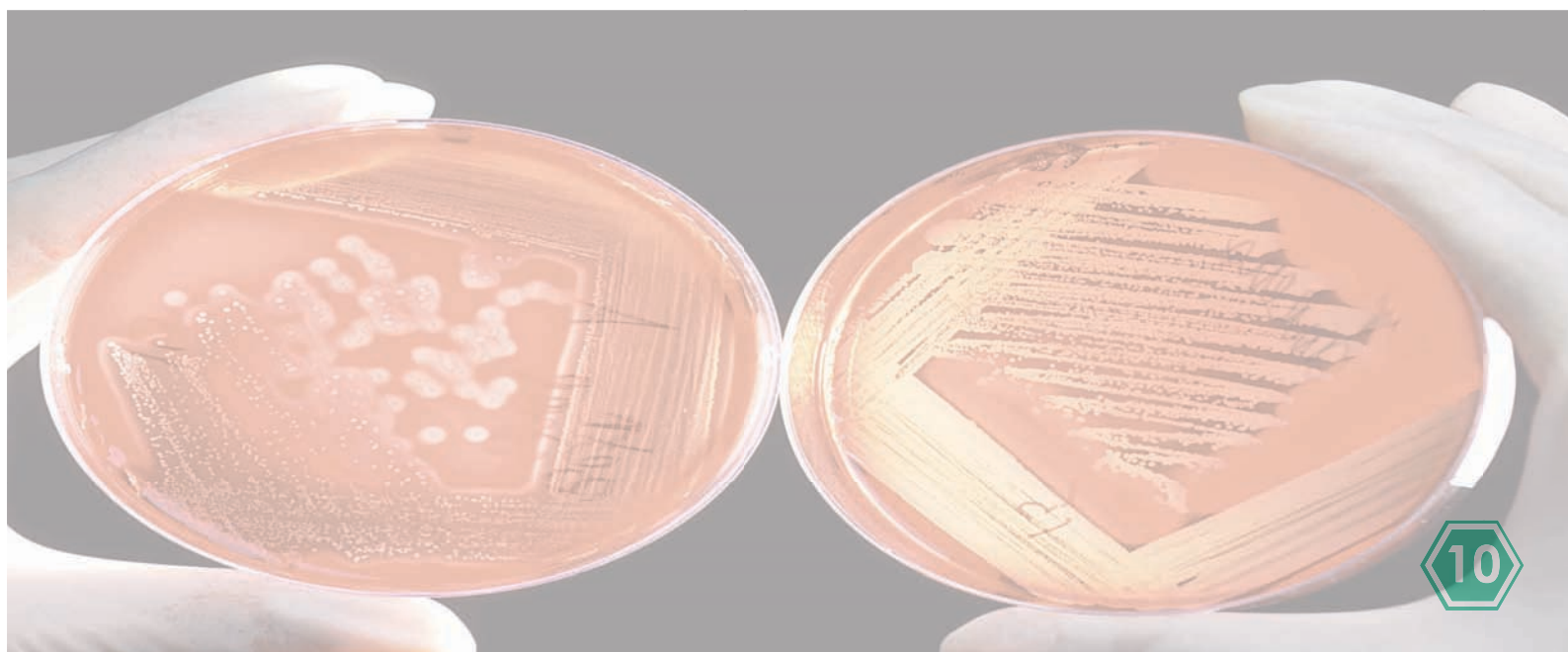
### ACIDS

Acetic Acid	Molybdic acid
Ascorbic Acid	Nitric Acid
Boric Acid	Oxalic Acid
Benzilic Acid	Oleic Acid
Chloric Acid	Perchloric Acid
Citric Acid	Phosphoric Acid
Cinnamic Acid	Phosphorous Acid
Folic Acid	Phthalic Acid
Formic Acid	Propiolic Acid
Fumaric Acid	Propionic Acid
Gallic Acid	Pyrophosphoric Acid
Glutaric Acid	Rosolic Acid
Gluconic Acid	Selenic Acid
Hexanoic Acid	Selenous acid
Hydrobromic Acid	Silicic Acid
Hydrochloric Acid	Silicic Acid
Hydrocyanic acid	Stearic Acid
Hydrofluoric Acid	Sulfuric Acid
Hydroiodic acid	Sulfurous acid
Hydrosulfuric Acid	D-(-)-Tartaric acid
Iodic Acid	L-(+)-Tartaric acid
Lactic Acid	Tannic Acid
L-(+)-Lactic acid	Telluric Acid
D-(-)-Lactic acid	Trifluoroacetic Acid
Malonic acid	Tungstic Acid
Malic Acid	Uric Acid

### SOLVENTS

Acetone AR	Ethanol AR
Acetone HPLC	Ethyl acetate AR
Acetonitrile AR	Ethyl acetate HPLC
Acetonitrile HPLC	Ethylene glycol AR
Acetonitrile LC-MS	Glycerol AR
Benzyl AR	Heptane AR
1-butanol AR	Heptane HPLC
1-butanol HPLC	Heptane LC-MS
Carbon disulfide AR	Hexane AR
Carbon disulfide HPLC	Hexane HPLC
Chlorobenzene AR	Isopropyl AR
Chlorobenzene HPLC	Methanol AR
Chloroform HPLC	Methanol HPLC
Chloroform AR	Methanol LC-MS
Cyclohexane AR	Pentane AR
Cyclohexane AR	Pentane HPLC
Cyclohexane HPLC	1-Propanol AR
Dichloromethane AR	1-Propanol HPLC
Dichloromethane HPLC	2-Propanol AR
1,2-Dichloroethane AR	2-Propanol HPLC
1,2-Dichloroethane HPLC	2-Propanol LC-MS
Diethyl ether AR	Pyridine AR
Diethyl ether HPLC	Pyridine HPLC
Dimethyl sulfoxide AR	Tetrahydrofuran AR
Dimethyl sulfoxide HPLC	Tetrahydrofuran HPLC
1,4-Dioxane AR	Toluene AR
1,4-Dioxane HPLC	Toluene HPLC

DEHYDRATED CULTURE MEDIA	
Agar, bacteriological	Nutrient Broth
Anaerobic Agar	Peptone Bacteriological
Baird-Parker Agar Base	Peptone Water
Beef Extract, Powder	Plate Count Agar
Blood Agar Base	Potato Dextrose Agar
Brain Heart Infusion Agar	Potato Dextrose Broth
Brain Heart Infusion Broth	Reinforced Clostridial Agar
Brilliant Green Agar	Reinforced Clostridial Medium
Buffered Peptone Water	Rose Bengal Agar Base
Campylobacter Agar Base	Sabouraud Dextrose Agar
Columbia Agar	Sabouraud Dextrose Broth
Columbia Blood Agar Base	Salmonella Shigella Agar
Corn Meal Agar14. DNase Agar	Selenite Broth
Eosin Methylene Blue Agar, Levine	Sheep Blood Agar Base
Heart Infusion Agar 20	Simmons Citrate Agar
Heart Infusion Broth	Skim Milk Powder
LB Agar (Lennox & Miller)	TCBS Agar
LB Broth (Lennox & Miller)	Tryptone
MacConkey Agar	Tryptone Soya Agar
Malt Extract Broth	Tryptone Soya Broth
Malt Extract	Tryptone Water
Malt Extract Agar	Urea Agar Base
Malt Extract Broth	Urea Broth Base
Mannitol Salt Agar	XLD Agar
Milk Agar	Yeast and Mould Agar
Mueller Hinton Agar	Yeast and Mould Broth
Mueller Hinton Broth	Yeast Extract
Nutrient Agar	





# LAB INSTRUMENTS

## WEIGHING

### Electronic Balances

### Industrial Balances

Weighing Capacity available: 8kg, 10kg, 12kg  
Std Deviation available: 0.01g, 0.1g

### Analytical Balances

Weighing Capacity available: 20g, 250g, 500g  
Std Deviation available: 0.001mg, 0.01mg, 0.1mg

### Precision Balances

Weighing Capacity available: 122g, 220g, 320g, 520g, 1220g, 2200g, 3200g, 5200g  
Std Deviation available: 0.001g, 0.01g

## HOMOGENIZER

### Basic Homogenizer

Speed(rpm): 8,000 - 30,000  
Max sample: 100ml

### High Speed Homogenizer

Speed(rpm): 500 - 25000  
Max sample: 2000ml



## CENTRIFUGE

### Mini Centrifuges

Capacity: 12 x 2ml  
Speed Range (rpm): 0 - 14,000

### Basic Centrifuges

Capacity: 4 x 100ml, 4 x 250ml  
Speed Range (rpm): 0 - 14,000

### Refrigerated Centrifuges

Capacity: 4 x 100ml, 4 x 250ml  
Speed Range (rpm): 0 - 14,000



## MICROSCOPES

### Binocular Microscope (for biological purpose)

4x, 10x, 40x and 100x Oil Plan Objectives  
10x Wide Field Eyepieces with 20mm field of view

### Binocular Microscope (for clinical purpose)

4x, 10x, 40x, and 100x oil Plan objectives  
10x wide field eyepieces with 18mm field of view

## MAGNETIC STIRRER

### Portable Magnetic Stirrer

Power: D Size Battery  
Dimension of plate (w x d): 150 x 160mm  
Speed Range (rpm): up to 1300

### Mini Magnetic Stirrer

Dimension of plate (w x d): 90 x 160mm  
Speed Range (rpm): up to 1300

### Multiposition Magnetic Stirrer

Dimension of plate (w x d): 550 x 210mm  
Speed Range (rpm): 100 to 1500

### Hotplate Magnetic Stirrer

Dimension of plate (w x d): 160 x 160mm  
Speed Range (rpm): 100 to 1500  
Temperature: 50 to 200 deg C

## ROTARY EVAPORATOR

### Vertical Evaporator

Joint size 24/40  
Rotation Speed Range (rpm) : 20 - 280  
Flask Size: 50ml - 4L  
Temperature (deg C): 20 - 180

### Diagonal Evaporator

Joint size 24/40  
Rotation Speed Range (rpm) : 20 - 280  
Flask Size: 50ml - 4L  
Temperature (deg C): 20 - 180

## ORBITAL SHAKER

### Mini Laboratory Orbital Shaker

Capacity: 3kg  
Speed Range (rpm): 30 to 300

### Laboratory Orbital Shaker

Capacity: 10kg  
Speed Range (rpm): 30 to 300



## VORTEX MIXER

### Fix Speed Vortex Mixer

Orbit Diameter: 4.2mm  
Speed (rpm): 2,500

### Variable Speed Vortex Mixer

Orbit Diameter: 4.2mm  
Speed Range (rpm) : 200 -2,500



## pH METER

### Benchtop Ph Meter c/w meter & probe stand

pH Range: -2 to 16  
pH Resolution: 0.1/0.01  
Datalogging : 100 points  
Buffer Recognition: NIST

### Portable Ph Meter c/w probe

pH Range: 0 to 14  
pH Resolution: 0.1/0.01  
Power: Triple A's Battery  
Buffer Recognition: NIST



## TDS/CONDUCTIVITY METER

### Portable TDS/Conductivity/Temp. Meter :

TDS Range: 0 – 200ppt  
Conductivity Range: 0  $\mu$ S to 200 mS  
Temperature Range: -10 to 110 deg C  
Power: Triple A's Battery  
Probe: TDS/Conductivity/Temp

## PORTABLE MULTIPARAMETER

### Portable Multiparameter

Ph Range: 2 to 16  
Conductivity Range: 0 to 200 mS  
Mv Range:  $\pm$ 2000  
TDS Range: 0 to 200 ppt  
Salinity Range: 0 to 50 ppt  
Temperature Range: -10 to 110 deg C  
Interface: RS232  
Power: Two Double A's Battery



## CRYOGENIC

### Cryogenic Tank (Liquid Nitrogen Tank)

Capacity available: 4Liter, 5Liter, 10Liter, 20Liter, 30Liter, 50Liter

### Cryo Glove

Length: Shoulder, Elbow, mid-arm, wrist  
Size available: S, M, L, XL



## INCUBATOR

### Laboratory Incubator

Available: Forced air circulation (fan) /  
Natural air circulation (convection)  
Capacity available: 32L, 53L, 74L, 108L, 161L, 256L, 449L, 749L  
Temperature: up to 80 deg C

### CO2 Incubator

Capacity available: 108L, 153L and 246L  
Temperature: up to 50 deg C

### Incubator Shaker

Capacity: 170L  
Shaking speed (rpm): 25 -300  
Temperature: up to 50 deg C



## REFRIGERATOR

### Laboratory Chiller

Capacity: 128 liter, Temp. Range +2 / +15 °C  
Capacity : 347 liter, Temp. Range +2 / +15 °C  
Capacity: 620 liter, Temp. Range +2 / +15 °C  
Capacity: 1355 liter, Temp. Range +2 / +15 °C

### Low temperature Refrigerator

Available: 3 inner Doors / 5 inner Doors  
Capacity : 363Liter, 480Liter, 597Liter, 714Liter

### Laboratory Refrigerator with freezer

Capacity: 170+160 liter, Temp. Range +2/+15 °C ; -10/-24 °C  
Capacity: 260+265 liter, Temp. Range +2/+15 °C ; -10/-24 °C

## HEATING MANTLE & BLOCK HEATER

### Flask Heating Mantle

Temperature Range: 0 to 450 deg C  
Capacity of flask available: 50ml, 100ml, 250ml, 500ml, 1L

### Digital Block Heater (2 Block)

Temperature Range: 8 to 130 deg C / 8 to 200 deg C

### Dual Control (temperature) Digital Block Heater (2 Block)

Temperature Range: 8 to 130 deg C / 50 to 200 deg C

### Digital Block Heater (3 Block)

Temperature Range: 8 to 130 deg C / 8 to 200 deg C

## HOT PLATE & WATER BATH

### Hotplate

Dimension of Plate: 7" x 7"  
Temperature: up to 500 deg C

### Waterbath

Temperature Control: up 95 deg C  
Capacity available : 7L, 10L, 14L, 22L, 29L, 45L

### Oilbath

Temperature Control: up 200 deg C  
Capacity available: 7L, 10L, 14L, 22L, 29L, 45L



## OVEN & FURNACE

### Laboratory Oven

Available: Forced / Natural Air Circulation  
Temperature: up to 300 deg C  
Can be controlled via PC  
Capacity available: 32L, 54L, 110L, 170L, 240L

### Laboratory Furnace

Temperature: 30 to 1300 deg C  
Capacity: 13.6L

## AUTOCLAVE

### Top Loading Autoclave

Capacity: 50L  
Dimension: 51 cm x 53 cm x 104 cm  
Operation Range (temp) : 105 to 135 deg C  
Operation Range (gauge): 3 to 30 psi  
Accessories: Mesh Wire Basket



## BT SCIENCE SDN.BHD

CONTACT US :

D3-16-1, Jalan Dutamas 3  
Taman Dutamas  
43200 Balakong  
Selangor Darul Ehsan  
Malaysia

Tel: +603-8940 0235  
Fax: +603-8940 9235

Email :  
[sales@btscience.com.my](mailto:sales@btscience.com.my)

## LAB INSTRUMENTS

**memmert**

**A&D**  
A&D Weighing

**HIRAYAMA**

**CORNING**

**DATHAN Scientific**  
YOUR PARTNER in LABORATORY

**MVE**

**stuart**

## LIFE SCIENCE & BIOTECHNOLOGY RESEARCH

**GIBCO**  
invitrogen cell culture

**QIAGEN**

**BD**

**OXOID**

**BIO-RAD**

**Promega**

**GE Healthcare**

## SEPARATION & FILTRATION

**Whatman®**  **sartorius**

**ADVANTECH**

**Filtres FIORONI**  
Filtres Fibres - since 1878

## CHEMICAL & CULTURE MEDIA

**SUPELCO**

**Agilent**

**nacalai tesque**  
The quality for certainty.

**J.T.Baker**

**SIGMA-ALDRICH**

**MERCK**